

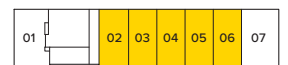
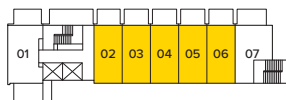
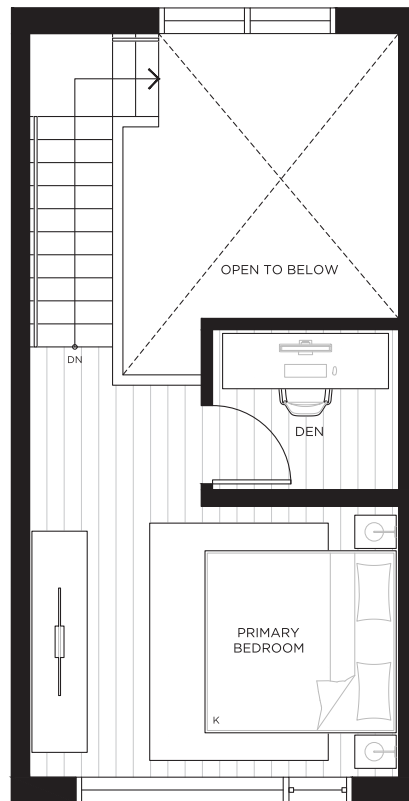
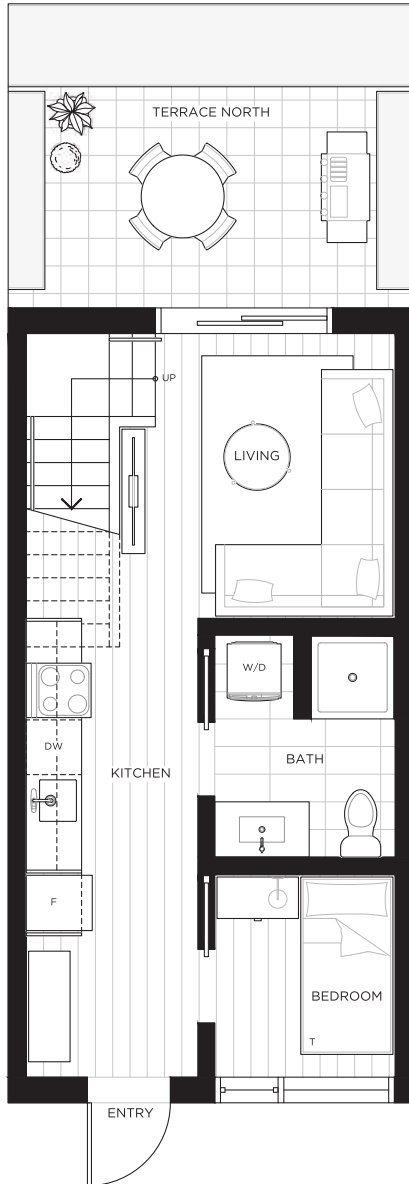
# CHROMA

On Scotia + E 2nd

## LOFT A

2 BED + DEN, 1 BATH

LIVING	662 SF
BALCONY	98 SF
TOTAL	760 SF



LEVEL 9

LEVEL 10



W [chromavancouver.ca](http://chromavancouver.ca)

T 604-724-9563

E [rent@chromavancouver.ca](mailto:rent@chromavancouver.ca)

Sizes and dimensions are approximate, actual may vary. Patio layouts and conditions may vary. The developer reserves the right to make changes and modifications to the information contained herein without prior notice. E.&O.E. \*Units 902, 904 and 906 are mirrored.

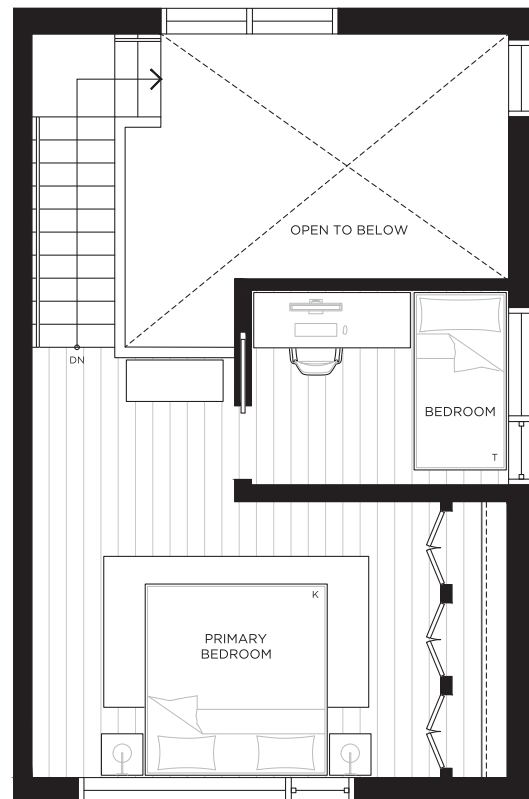
# CHROMA

On Scotia + E 2nd

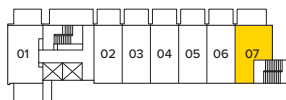
## LOFT C

2 BED + FLEX, 1 BATH

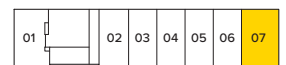
LIVING 796 SF  
BALCONY 116 SF  
TOTAL 912 SF



Developed By  
**WAVE**  
DEVELOPMENTS



LEVEL 9



LEVEL 10



W [chromavancouver.ca](http://chromavancouver.ca)

T 604-724-9563

E [rent@chromavancouver.ca](mailto:rent@chromavancouver.ca)

Sizes and dimensions are approximate, actual may vary. Patio layouts and conditions may vary. The developer reserves the right to make changes and modifications to the information contained herein without prior notice. E.&O.E.