

# CHROMA

On Scotia + E 2nd

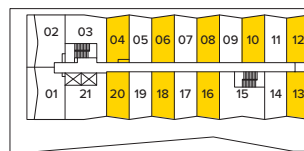
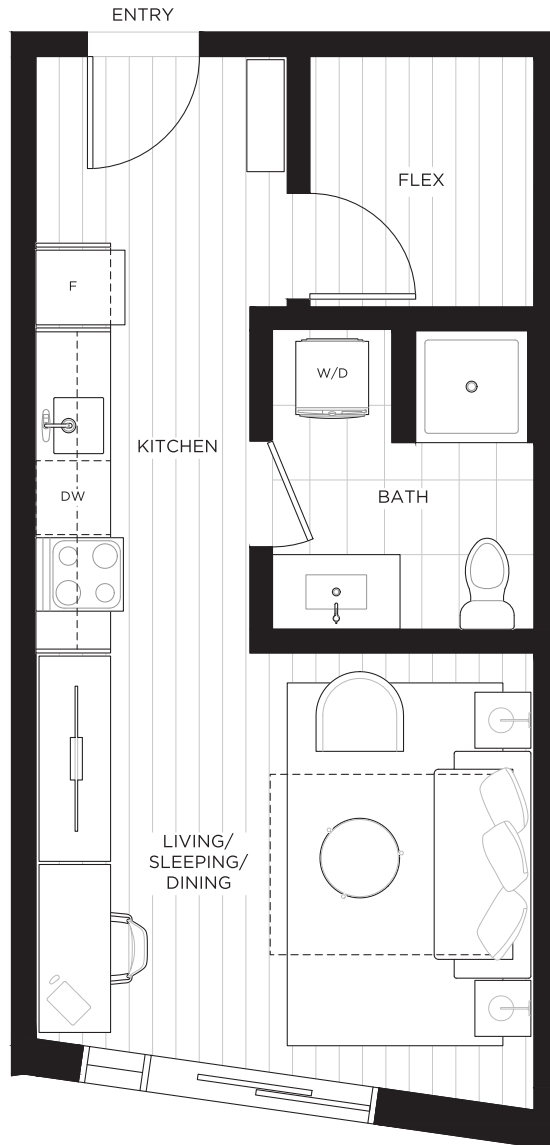
# FLAT A

STUDIO + FLEX, 1 BATH

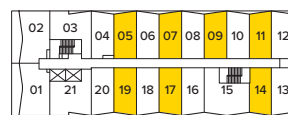
LIVING 389 - 422 SF

BALCONY 0 SF

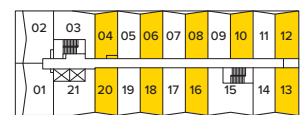
TOTAL 389 - 422 SF



LEVEL 3



LEVELS 4,6,8



LEVELS 5,7



W [chromavancouver.ca](http://chromavancouver.ca)

T 604-724-9563

E [rent@chromavancouver.ca](mailto:rent@chromavancouver.ca)

Sizes and dimensions are approximate, actual may vary. Patio layouts and conditions may vary. The developer reserves the right to make changes and modifications to the information contained herein without prior notice. E.&O.E.

# CHROMA

On Scotia + E 2nd

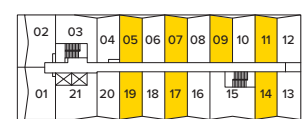
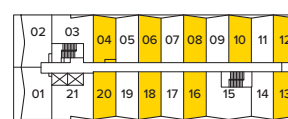
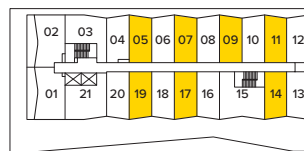
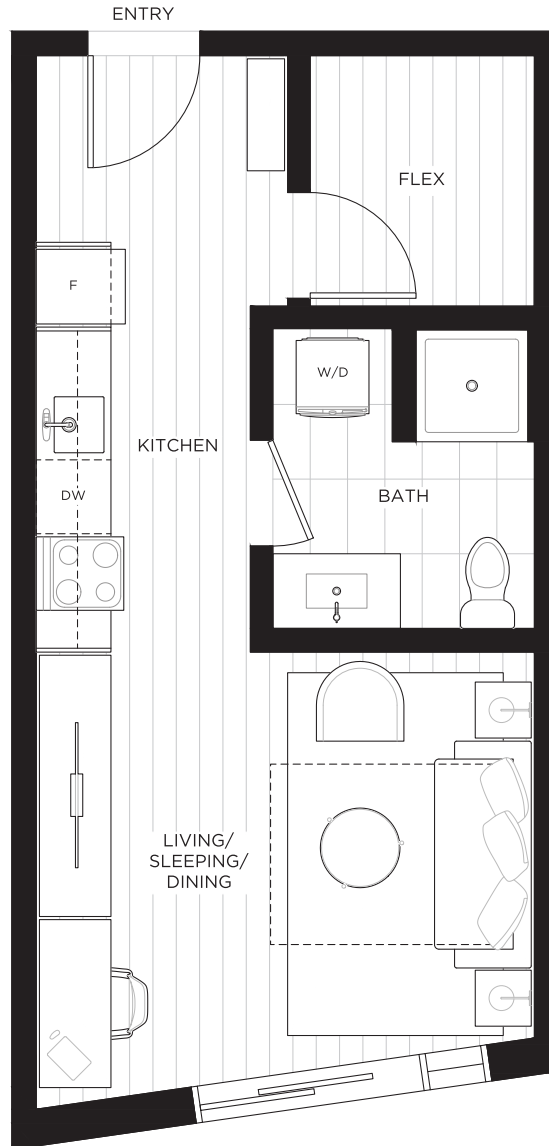
# FLAT A1

STUDIO + FLEX, 1 BATH

LIVING 389 - 422 SF

BALCONY 0 SF

TOTAL 389 - 422 SF



W [chromavancouver.ca](http://chromavancouver.ca)  
T 604-724-9563  
E [rent@chromavancouver.ca](mailto:rent@chromavancouver.ca)

Sizes and dimensions are approximate, actual may vary. Patio layouts and conditions may vary. The developer reserves the right to make changes and modifications to the information contained herein without prior notice. E.&O.E. \*Units 405, 407, 409, 411, 414, 417 and 4419 are mirrored.

